



**JigsawPlatform**  
Product Brochure

# YOU DECIDE THE SHAPE OF THE PUZZLE... ...WE'LL MAKE THE PIECES FIT.

## JIGSAW PLATFORM



Jigsaw Platform is a fully customisable software solution that enables traders to quickly and easily view financial market data and news from any source in the same application. This unique desktop environment allows users to configure display applications and components to meet their individual requirements. Layout managers and design controls can be combined with real-time data display components to produce attractive and functionally rich displays.

Jigsaw utilizes Microsoft® ActiveX® (Visual C++®) and is designed to support swift implementation of market data and trading desktops operating on Microsoft Windows. Functionality and data content can be changed incrementally thus reducing costs associated with software upgrades. Ultimately, Jigsaw Platform provides greater flexibility and choice by allowing the user to decide what information they want to see and how they want to view it.



Jigsaw Terminal is shown here with a sample of the available Display Components

## FLEXIBLE

Jigsaw display applications and components are fully customisable. User interface properties such as color, font, hot buttons and other aesthetic features may be set up according to individual user preferences.

The application workspace displays a list of saved documents (layouts) and pre-defined data services for quick access. Instrument alias codes may also be set up and shared between users and data access is managed according to individual needs with various user groups permissioned for different data content.

## RESILIENT

Servers supplying data to Jigsaw display controls may be replicated across the network to provide redundancy in the case of single system failure. Alternative data sources are configured from the user application so that the Jigsaw client application will automatically attempt to connect to an alternative source if connectivity to the primary source fails. Additionally, central servers allow end-users to restore historical data in the event that their PC is switched off or suffers a failure.

## COST EFFECTIVE

Jigsaw applications enable organisations to make incremental changes to their data content without having to completely upgrade software and user interface.

This provides significant savings by avoiding unnecessary costs associated with implementation, testing and user training.

## MULTI-LANGUAGE

Jigsaw components can display data in multiple languages, and several languages can be combined in a single display.



## PRODUCT FEATURES

- ◆ Available with Japanese and English user interface and able to display data in multiple languages, Jigsaw has thousands of existing users.
- ◆ Jigsaw offers a low cost, scalable solution deployable over internet or intranet networks.
- ◆ Jigsaw display components are fully customisable, allowing end users to access only the functionality that is relevant to the task at hand. New or third-party components may be easily integrated to provide the required solution.
- ◆ Jigsaw display components may be deployed in a Jigsaw Terminal, Microsoft Internet Explorer, Excel, or any other ActiveX container.
- ◆ Jigsaw data center hosted servers support market data and news from any source including market data vendors, direct exchange data feeds and other in-house data sources.
- ◆ Data display attributes are completely separated from the underlying delivery mechanism which enables data sources to be changed or mixed without affecting the way that the data is displayed.

## JIGSAW COMPONENTS

Jigsaw provides a toolkit of components and templates which may be configured in a variety of ways to suit business requirements. Due to strict adherence to Microsoft development standards, the components may easily be integrated with other solutions that are also based on ActiveX (including standard Microsoft products such as Internet Explorer and Excel).

Jigsaw components are available separately, or as a package that may be deployed off-the-shelf or integrated with other compatible software. Jigsaw client application infrastructure is based on three classes of components that allow the data display attributes to be completely separated from the delivery mechanism. They are:

### ◆ Display Components

Display Components provide the ability to display a variety of data, such as News, Quotes, and Charts, according to a set of attributes (methods and events), which may be defined for each constituent component. Display Components interact with Container Components for navigation, screen management, linking between controls, and other usability features.

### ◆ Container Components

Container Components provide an open environment with which to build Jigsaw document applications. This environment supports application customisation features such as user interface navigation, menus, window management, toolbars, visual linking, and screen management (such as save and restore). The container interface is accessible using standard tools such as Microsoft Visual C++®, Visual Basic® and VB scripting. Display components which include Jigsaw, third party or customer components, may be "plugged in" as they become available without the need to redevelop the container. Jigsaw is an API that provides rich functionality and flexible attributes whereby the container components communicate with display and data feed components using the Jigsaw Interface.

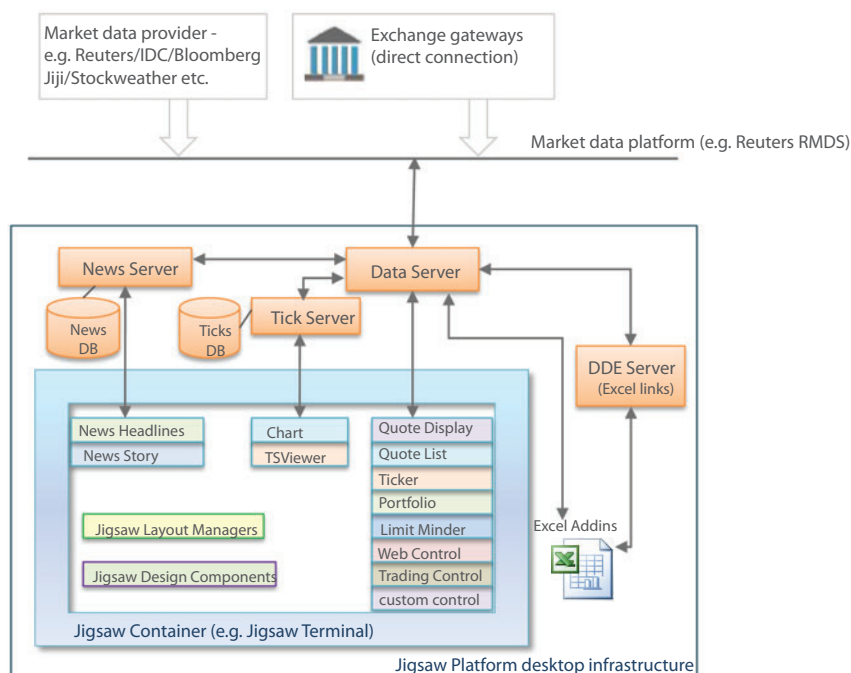
### ◆ Data feed Components & Servers

Data feed and Server components manage the flow of data from the data source which may be a direct exchange feed or a vendor data feed, from providers such as Reuters, Jiji Press, InterActive Data, Bloomberg, Stockweather and others. Jigsaw infrastructure fully accommodates differences in delivery environments so that display controls may be re-used with different data feeds. This allows new data feeds to be plugged in as required. Cascading servers may also be configured to multi-cast data to a larger number of users.

### ◆ Data feed Components & Servers

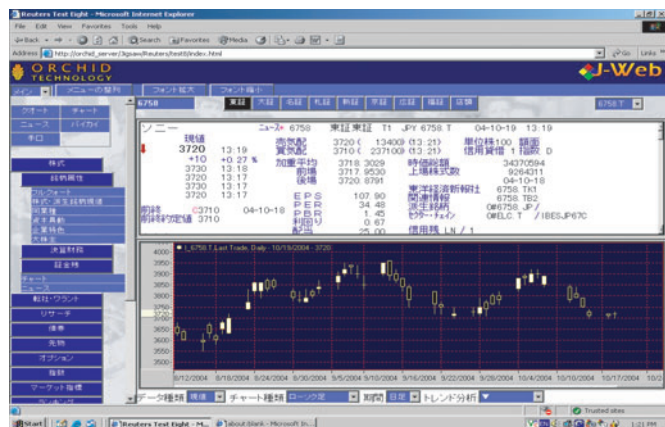
### ◆ Container Components

### ◆ Display Components





MarketChart features stylish user interface and sophisticated charting functionality



Jigsaw components with HTML scripting produce a customised user interface

## JIGSAW ON THE INTERNET

Jigsaw Platform may be integrated into a web browser to provide a cost-effective, thin client solution distributed over a VPN or via the public Internet.

Jigsaw display components may be used within any ActiveX-compatible web browser, such as Microsoft Internet Explorer, and are available separately or as part of a bundled solution. Java and AJAX-based HTML solutions are available for generic browsers.

Jigsaw's advanced charting software, MarketChart, is available as a web-based package, suitable for enhancing financial product websites with professional level charts. With numerous chart types, drawing tools and technical studies, MarketChart is powerful but lightweight, and can chart every tick.

Data server components operate locally on the client PC where they receive data directly from the corresponding data centre which is then cached and distributed by MarketCast servers (or other infrastructure). The architecture and internal protocol supports both HTTP tunneling for exchanging messages with clients connected via firewalls, and connections via Proxy Servers.

The front-end display features may be manipulated using HTML scripting to tailor it to end user requirements. Users may configure their settings according to individual preferences and maintain the same settings irrespective of the data source.

## JIGSAW ON MOBILE PHONES

JigsawMobile provides a suite of robust, secure solutions for delivering reliable real-time market data, news and trading to mobile phones.

The content-rich user interface is intuitive and customisable. Trading functionality is smooth and reliable, with portfolio monitoring and execution notification.

JigsawMobile infrastructure can be configured to connect to multiple data sources, news vendor feeds and trading environments.

Professional-level charting functionality includes interactive features such as zoom, scroll etc.

JigsawMobile application is available in a variety of Java, BREW, iPhone and Android versions, for worldwide deployment.

JigsawMobile is also available as a web-based version.



Access all the information you need through your mobile phone - anytime and anywhere

**Contact us:** sales@ortech.co.jp TEL (81)3 3560 1585

Orchid Technology K.K.  
3F, Kamiyacho Square Bldg,  
Azabudai 1-7-3, Minato-ku  
Tokyo 106-0041

 **ORCHID**  
TECHNOLOGY  
www.orchidtechnology.com